



GAT MONTHLY MEMBERSHIP PROGRESS REPORT

Results as of: 5/31/2023

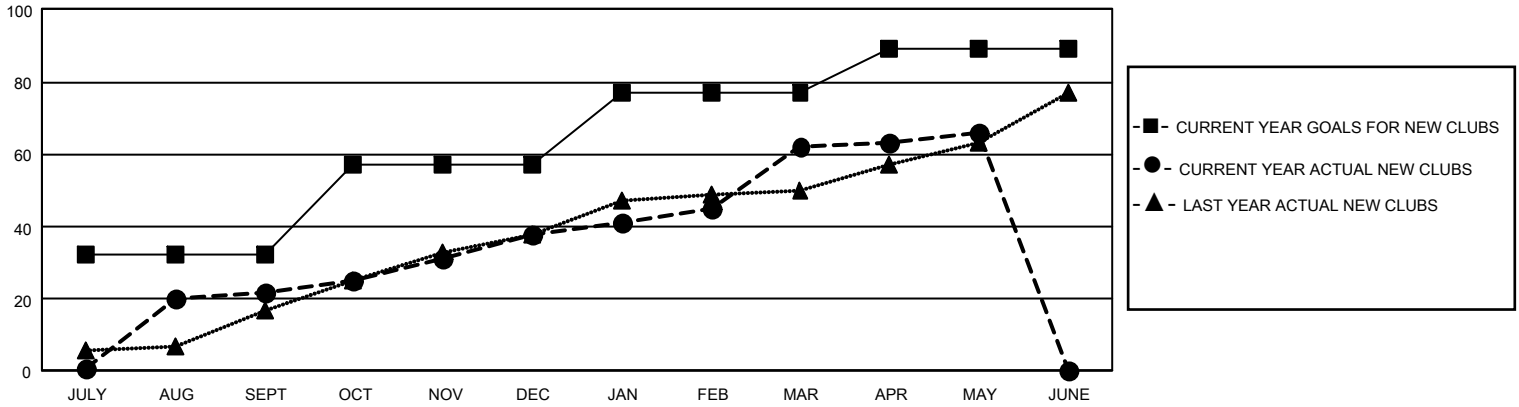
GMT Constitutional Area 6, Group G

REPORT DOES NOT INCLUDE CLUBS IN UNDISTRICTED AREAS.

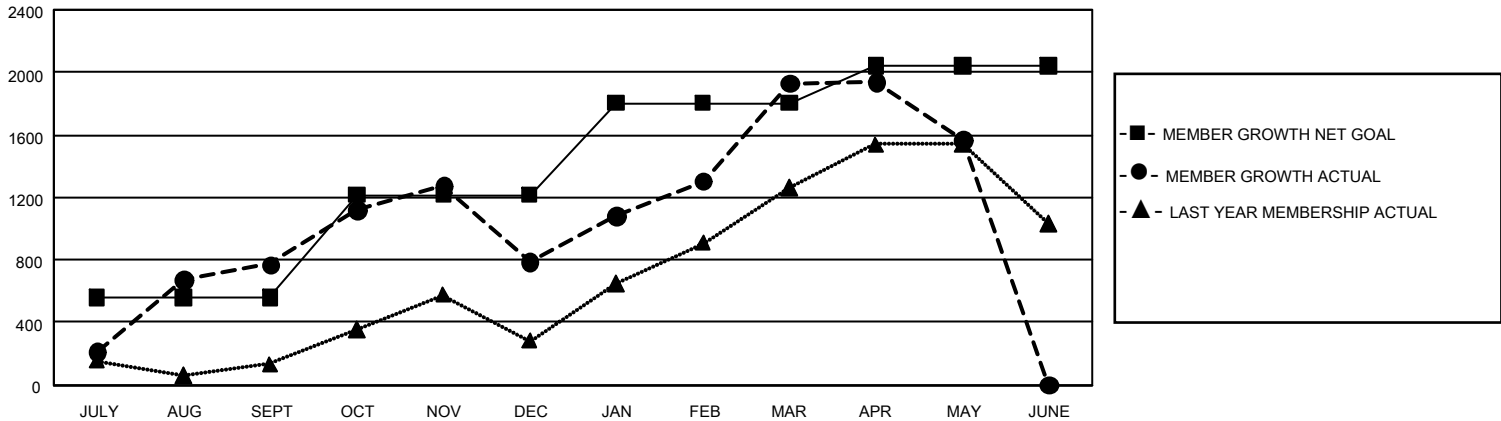
Clubs			
RESULTS FOR 2022-2023			
QUARTER	NEW CLUB GOAL	NEW CLUBS	DROPPED CLUBS
JULY/AUG/SEPT	96	22	3
OCT/NOV/DEC	75	16	22
JAN/FEB/MAR	60	24	6
APR/MAY/JUNE	36	4	1

Members			
RESULTS FOR 2022-2023			
QUARTER	MEMBER GROWTH NET GOAL	MEMBER GROWTH ACTUAL	DROPPED MEMBERS ACTUAL (including transfers)
JULY/AUG/SEPT	560	1,361	538
OCT/NOV/DEC	655	1,360	1,259
JAN/FEB/MAR	590	1,572	355
APR/MAY/JUNE	240	405	697

GOALS AND ACTUAL NEW CLUBS CUMULATIVE



GOALS AND ACTUAL MEMBERS CUMULATIVE



DROPPED CLUBS: 32	558 CLUBS OF 826 ADDED 1 OR MORE NEW MEMBERS	<u>GENDER DISTRIBUTION</u>	
<u>DROPPED MEMBERS</u>		MALE	21,507 (80.60%)
DECEASED	112	FEMALE	5,176 (19.40%)
CLUB CANCELLED	588	NON BINARY	1 (0.00%)
OTHER	2,149	PREFER NOT TO ANSWER	1 (0.00%)
TOTAL	2,849	TOTAL FAMILY UNIT MEMBERS	9,064
	CLICK HERE FOR CUMULATIVE MEMBERSHIP DATA	FAMILY MEMBERS PAYING HALF DUES	4,805